

Design & Visual Merchandising Casters



Jilson

We go to extremes to make things move.™

We go to extremes to make things move.

We have all the right moves at Jilson. As suppliers of high quality casters from around the world, we offer the largest selection of casters and related products of any company in the US. And we also assemble casters – with components from some of the world's finest caster and wheel manufacturers.

Since our inception in 1974, we've been on a roll. The goal then was to offer unique, high-end products that were difficult to find. While our specialty

will always include hard-to-find items, today we offer all types of casters – possibly the largest assortment of casters and wheels in one place anywhere – from Germany, Sweden, Italy, France, Canada, Taiwan and Israel – as well as the US.

Always one wheel ahead of the competition

One thing that makes us different from any other caster supplier is our inventory. We literally have hundreds of thousands of casters in stock. And what we don't have, we will get or make for you.

Another big difference is our experience. Our people are so knowledgeable – our expertise is legendary. We're known as "the caster resource" of the industry.

So not only can we deliver exactly what you need, we can help you solve even your toughest mobility problems – with results that are guaranteed to keep things rolling.

Jilson puts the moves on design and visual merchandising applications

Designers of visual merchandising, medical equipment or furniture, will find that "perfect caster" in Jilson's broad range of attractive, yet competitively priced casters. Our collection includes sophisticated and high-styled casters for advanced medical diagnostic equipment, as well as cost effective twin-wheel casters for temporary P-O-P displays – plus everything in between.

Jilson has quite possibly the largest selection of casters anywhere – and the most attractive, too.

We've got your wheels

Can't find that perfect caster in this brochure? Need more information? Give us a call at 800-969-5400. We'll send you one of our other industry specific brochures: Healthcare and Institutional; Stainless Steel, Non-Corrosive and Non-Magnetic; and Industrial Casters.

No matter what kind of casters you need...from our smallest ($\frac{3}{16}$ " diameter)...to our largest (15 $\frac{3}{4}$ " diameter)...to our strongest caster which can support 15,000 pounds...you can count on Jilson for a great set of wheels...
because we go to extremes to make things move.

SELECTION KEY:

Use these icons to quickly find the casters for your application.



Light Weight Furniture



Furniture



Point-of-Purchase



Visual Merchandising



Medical & Institutional

TABLE OF CONTENTS

Selection Guide	1	Nylon Single Wheel Casters	14
Twin-Wheel Casters	7	Single Leg Casters	16
Steel Single Wheel Casters	11		

How to make all the right moves when selecting your casters

Your specific application may require casters which must withstand not only the rigors of excessive activity – they must also satisfy the specifications of each individual application. The applications mentioned in this catalog are typical examples only – contact Jilson to discuss your specific needs. To select the right casters for your application, please be prepared to answer these questions:

- Does the caster need to blend in with the design of the unit, either in style or color?
- What is the total weight that will be transported?
- What environment will the equipment be used in? For instance, will the equipment move on carpeting or smooth tile flooring? Will it be subject to excessive shock or abuse?
- Will the equipment be moved long or short distances? Does it need to swivel for easy maneuverability or does it need to be rigid for straight tracking down long hallways? Does it require even greater control over each individual casters' braking or swivel-locking mechanism?
- What other unique conditions will the equipment be exposed to? Extreme heat or cold... excessive moisture or soiling... acidic substances... will help to determine the appropriate fork and wheel materials.

Learn the lingo...

Does it seem like some other caster companies are speaking a foreign language? Can't tell a wheel brake from a swivel lock? Here's a handy reference guide of "caster-speak" – so you can be sure that what you want, is what you get!

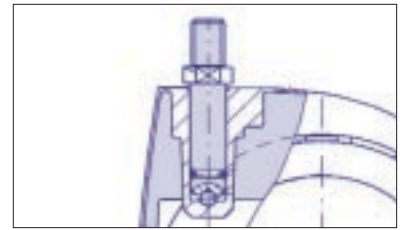
Swivel and Rigid Casters

Swivel Casters: The swivel casters in this catalog come equipped with many different types of swivel bearings. From the simplest plain bearing found in the OEA series, to sealed precision ball bearings found in others, each is designed for the greatest mobility and control.

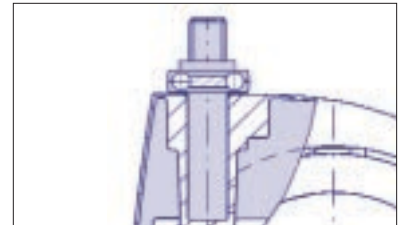
Swivel Bearing Types

- **Plain Bearing:** The stem of the caster pivots in the caster body. In some plain bearing swivels, there's a ball at the base of the stem allowing the swivel to pivot more easily and smoothly.
- **Full Complement:** A design which has one row of balls at the stem base providing easier swiveling than the plain bearing swivel.
- **Standard Double-Row Ball:** This swivel has two rows of balls – an upper and a lower row – which are precisely staked together allowing for easy swiveling and flutter-free performance.
- **Protected Double-Row Ball:** In this design, two rows of balls are protected by a metal or plastic shield, allowing for great swiveling ease while helping to keep the environment out.
- **Sealed Precision Ball Bearing:** One sealed precision radial ball bearing incorporated into the swivel head, providing the greatest ease of swiveling and very smooth operation. This design is ideal for heavy or expensive equipment.

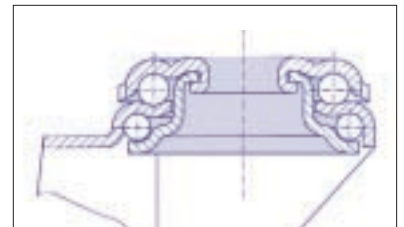
Rigid Casters: Rigid casters do not swivel. They allow greater control of the equipment



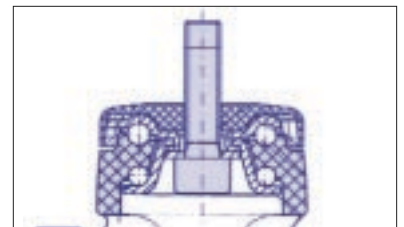
Plain Bearing



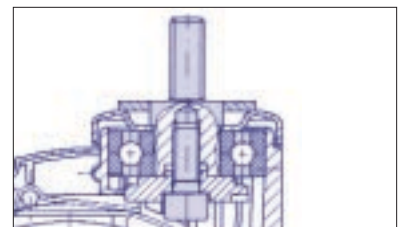
Full Complement



Standard Double-Row Ball



Protected Double-Row Ball



Sealed Precision Ball Bearing



Rigid Caster

when pushed long distances, allowing the equipment to track and steer more easily.

Wheel: The wheel is the rolling element within the caster.



Wheel Brake



Maxi-Lok



Track-Lok



Dual-Function Brake

Brake Types

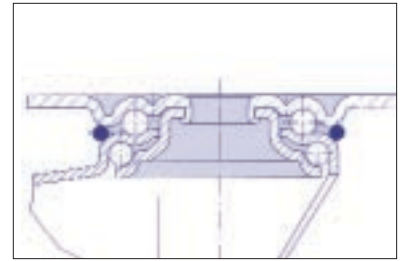
Many casters shown in this catalog are available with brakes and swivel locks to provide for greater safety and control of your equipment.

Wheel Brake: Locks the wheel only, prohibiting the equipment from moving.

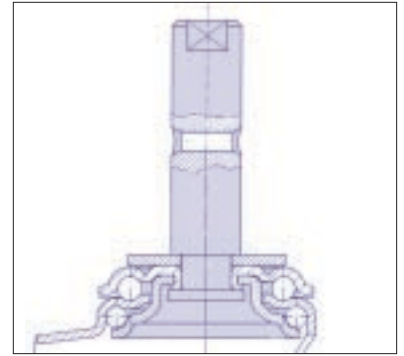
Maxi-Lok™: The most positive type of brake available! Simultaneously locks the wheel and swivel in any position – instantly and positively immobilizing your equipment. With a toe tap, this mechanism allows no movement of the wheel or swivel, offering greater safety and stability than even the most effective wheel brake. Another toe tap releases the brake for exceptional mobility.

Track-Lok™: A steering lock caster which makes it easier to push equipment long distances. Just step on the pedal and a swivel caster becomes rigid for straight line tracking.

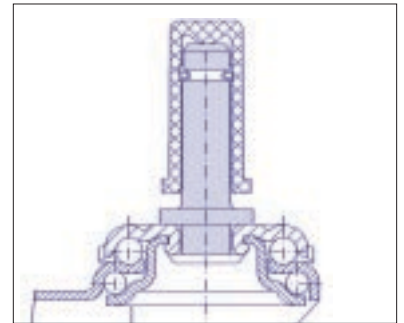
Dual-Function Brake: This pedal-activated mechanism combines the Maxi-Lok and Track-Lok features in one caster for maximum control and stability.



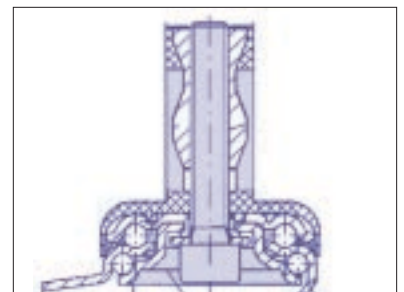
Top Plate



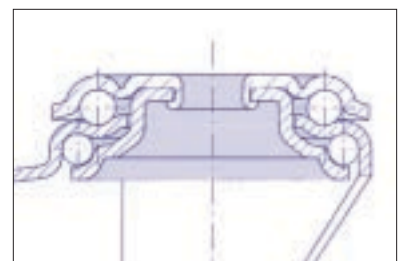
Stem



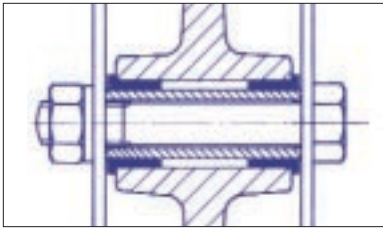
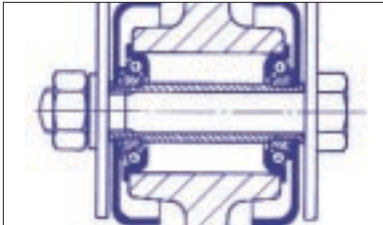
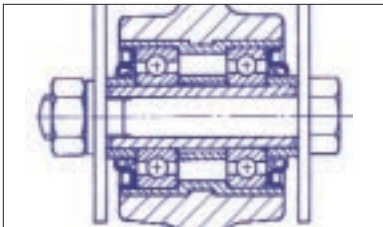
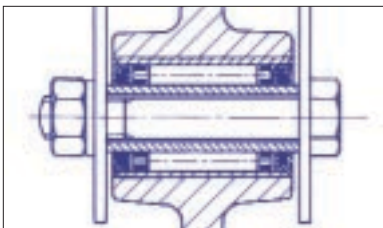
Socket



Expanding Stem



Hollow Kingpin

**Plain or Sleeve Bearing****Ball Bearing****Precision Ball Bearing****Roller Bearing**

Mounting Systems

Jilson can accommodate almost any mounting requirement you have. Some of the more popular mounting types are...

Top Plate: A square or rectangular flat plate, which normally attaches to your equipment with four fasteners. This is the strongest and most secure way of attaching a caster to your equipment.

Stem: A metal pin protrudes from the top of the caster into your equipment. Pin stems can be supplied with grip-rings, cross-holes, as threaded bolts or in a wide variety of other designs. Many pin stems are designed to work with sockets used to adapt the caster into round or square tubing, or into wood.

Expanding Stem: Nylon expanders are available in a wide variety of sizes to install casters into round or square tubing. Expanding stems are available for tubes with inside dimensions from 0.708" to 1.250". Larger sizes are available for some series.

Hollow Kingpin: This is the least expensive and easiest method of attaching casters to your equipment. With this mount, a bolt is installed through a hole in the swivel bearing. Jilson can provide the hardware needed to attach the caster to your equipment, based on your specifications.

Special Mounting Systems: Let the Jilson experts design the best possible mounting system for your application – just give us a call at 800-969-5400.

Load Capacity

To determine the load capacity of the caster you require, divide the total loaded weight to be supported by the number of casters on your equipment. Building in a safety factor of at least 25% is recommended for most applications, however, more severe applications may require a higher safety factor. Please contact Jilson for additional help in determining your needs.

Wheel Size & Tread Width

The wheel diameter is one factor that determines how easily the caster will roll – that is, the larger the diameter, the easier it rolls. Another factor is tread width – a wider tread width can support more weight (increasing load capacity), while a narrower tread, with less surface contact, rolls more easily (yet decreases load capacity).

Wheel Bearing Types

Wheel bearings reduce the friction between the wheel and axle making your equipment easier to push. When selecting the appropriate wheel bearing for your application, the environment must be taken into consideration. Shields and seals can be supplied with some roller and ball bearings, prohibiting debris from fouling the bearing.

Plain Bearing: With plain bearings, the wheel rides directly on the axle. This is the least expensive type of wheel bearing and should be selected only for very light equipment or when cost is a more important consideration than performance.

Sleeve Bearing: With a sleeve bearing, the wheel revolves on a smooth sleeve to reduce friction. This is an inexpensive, quiet and strong type of bearing. Sleeves are available in hardened steel, as well as plastic and stainless steel for use in corrosive applications.

Ball Bearing: Ball bearings greatly reduce the amount of friction and provide excellent rolling ease. There are many types of ball bearings used in caster wheels – give us a call and we'll help you choose the right one based on your load and performance needs.

Precision Ball Bearing: This is the best ball bearing type available. The precision ball bearing offers the greatest rolling ease for carrying heavy loads and has a long lifespan. This smooth, quiet running bearing is the right choice for expensive or heavy medical equipment.

Roller Bearing: Roller bearings offer great rolling ease and can carry heavy loads. These bearings always revolve on a hardened sleeve and require relubrication.

Wheel Materials

Wheel materials should be selected according to the load capacity required, floor conditions and the environment. Rough, hard or uneven floors generally require a resilient tire, which is quiet, absorbs shock and offers increased floor protection. Hard tread wheels roll more easily,

TIRE/WHEEL MATERIAL	LOAD CAPACITY	QUIET RIDE	FLOOR PROTECTION	SHOCK ABSORPTION	ROLLABILITY	MOISTURE RESISTANCE	WEAR
Nylon	1	4	4	4	1	1	1
Polyolefin	2	4	4	4	2	2	2
Phenolic	1	5	4	5	2	4	3
Cushion Rubber	4	2	2	2	4	4	3
Hard Rubber	2	4	4	4	3	4	3
Thermoplastic Rubber	4	2	2	3	3	3	2
Polyurethane	1	3	2	3	2	2	2
SuperSoft	3	1	1	1	3	3	3

Legend: 1= Excellent 2= Superior 3= Very Good 4= Good 5= Fair

Note: this chart is intended for reference only. Please consult Jilson for specific recommendations.

especially on carpeted floors, and have a greater load capacity than more resilient wheel treads.

Nylon: Nylon wheels are a hard, milky white colored plastic, that are ideal for carpeted floors, wet environments or if heavy loads must be carried.

Polyolefin: These are hard plastic wheels that perform like nylon, but don't take as much shock or work as well in wet environments. They are available in a high temperature version for applications up to 550°F (285°C).

Phenolic: These wheels are made of a hard, black material that rolls very easily, but is not great for shock loads or in wet environments. They are available in a high temperature version for applications in excess of 300°F (150°C), but not greater than 525°F (275°C).



Finishes shown left to right:
Grey Nylon, Black Nylon, Bright Zinc Plating, and Powder Coating,



Thread Guards

Twin-wheel casters typically carry more weight than single wheel casters. They are available from the simplest and most cost effective Series 0EA and 0IA to the most sophisticated and high-styled Series 1EA/2EA/2EM.

0EA – Centerbody Nylon Twin-Wheel Swivel Casters

Capacities up to 175 lb.

Produced of virgin nylon material, these casters are strong, durable and enhance the appearance of your products. Many sizes are available with a wheel brake.



Sizes: 1-1/2", 1-3/4", 2", 2-3/8", 3", 4" and 5" (38, 45, 50, 60, 75, 100 and 125 mm)

Mounting Types: Top plate, grip-ring, socket and threaded stems. Complete assortment of sockets available to fit almost any application.

Finish: Black is standard. These casters can be color matched (subject to minimum order quantity).

Tire Material: Nylon wheels are standard.

Options: Polyurethane tires are available on 2" and larger sizes.

Typical Applications Include: Light weight furniture, P-O-P, store fixtures.



0IA – Hooded Nylon Twin-Wheel Swivel Casters

Capacities up to 150 lb.

Produced of virgin nylon material, these casters are strong, durable and enhance the appearance of your products. Most sizes are available with wheel brake.



Sizes: 1", 1-3/16", 1-3/8", 1-9/16", 1-3/4", 2" and 2-3/8" (25, 30, 35, 40, 45, 50 and 60 mm)

Mounting Types: Top plate, grip-ring, socket and threaded stems. Complete assortment of sockets available to fit almost any application.

Finish: Black is standard. These casters can be color matched (subject to minimum order quantity).

Tire Materials: Nylon wheels are standard. The 2" size is available with resilient polyurethane tires.

Options: 2" and 2-3/8" sizes available with chrome, brass or antique brass plated body cap.

1-3/4", 2" and 2-3/8" sizes available with chrome plated or black powder coated zinc die cast body (Series 0JA).

Typical Applications Include: Light weight furniture, P-O-P, store fixtures.



11B – Hooded Nylon Twin-Wheel Casters**Capacities up to 135 lb.**

High-style twin-wheel casters available as swivel and swivel with wheel brake. Produced of virgin nylon, these casters are strong, durable and enhance the appearance of your products.



Sizes: 2" and 3" (52 and 75 mm)

Mounting Types: Top plate, grip-ring, socket, expanding and threaded stems. Complete assortment of sockets available to fit almost any application.

Finish: Black is standard. These casters can be color matched (subject to minimum order quantity).

Tire Materials: Nylon, thermoplastic rubber, polyurethane and antistatic materials. Wheels are riveted to the axle for greater security and strength.

Typical Applications Include: Light weight furniture, P-O-P, visual merchandising, medical and institutional.

11JB – Hooded Die Cast Twin-Wheel Casters**Capacities up to 155 lb.**

High-style twin-wheel casters available as swivel and swivel with wheel brake. With zinc die cast bodies, these casters are not only strong and durable, they will enhance the appearance of your products. Powder coating is available for color matching your product.



Sizes: 2", 3" and 4" (52, 75 and 100 mm)

Mounting Types: Top plate, grip-ring, socket, expanding and threaded stems. Complete assortment of sockets available to fit almost any application.

Finishes: Chrome plated or powder coated black bodies with black nylon wheel hubs. These casters can be color matched (subject to minimum order quantity).

Tire Materials: Thermoplastic rubber, polyurethane and antistatic materials. 2" and 3" sizes also available with black nylon wheels. Wheels are riveted to the axle for greater security and strength.

Typical Applications Include: Light weight furniture, P-O-P, visual merchandising, medical and institutional.

1EE – Centerbody Nylon Twin-Wheel Casters**Capacities up to 220 lb.**

These twin-wheel casters are available as swivel and swivel with Maxi-Lok™, combination swivel lock and wheel brake. Solid nylon bodies with full complement swivel bearing – these casters roll and swivel easily (without “flutter!”) and



Sizes: 3", 4" and 4-3/4" (75, 100 and 120 mm)

Mounting Types: Top plate, grip-ring and threaded stems.

Finish: Grey color body and wheel hubs. These casters can be color matched (subject to minimum order quantity).

Tire Material: All sizes available with dark grey polyurethane tires. 4" and 4-3/4" sizes have needle bearings in the wheels for maximum mobility. All wheels are riveted to the axle for security and strength.

Typical Applications Include: Furniture, visual merchandising, medical and institutional.

1PF and 2PF – Medium Duty Dual-Wheel Casters**Capacities up to 200 lb.**

Stamped steel dual-wheel casters available as swivel, swivel with Maxi-Lok™ combination swivel lock and wheel brake in the 3" size (the 2" with a wheel brake only). These casters have a strong, easy pivoting double-row ball bearing swivel.



Sizes: 2" and 3" (50 and 75 mm)

Mounting Types: Top plate, hollow kingpin, pin, expanding and threaded stems.

Finishes: Bright zinc-chromatized plated finish. These casters can be color matched to your equipment (subject to minimum order quantity).

Tire Materials: Available with antistatic, grey rubber; nylon and polyurethane tires. All wheels have sleeve, plain or ball bearings in the wheels. All wheels have nut & bolt axle for ease of cleaning. Thread guards are available on many wheels.

Typical Applications Include: Furniture, visual merchandising, medical and institutional.

1EA/2EA/2EM – Twin-Wheel and Sealed Nylon Casters**Capacities up to 330 lb.**

Very strong twin-wheel nylon body casters available as swivel and swivel with brake. 2-1/2" casters have wheel brakes; 3", 4" and 5" sizes feature the Maxi-Lok™ brake. The 5" casters are available with the Track-Lok™ steering lock mechanism. The 5" caster swivel has a strong, sealed precision ball bearing for maximum swiveling ease. A 2-1/2" rigid caster is also available. The body is designed to prohibit the accumulation of string, sutures and other debris from jamming the wheels, allowing them to roll freely.



Sizes: 2-1/2", 3", 4" and 5" (65, 75, 100 and 125 mm)

Mounting Types: Top plate, grip-ring, socket, expanding and threaded stems. Complete assortment of sockets available to fit almost any application.

Finish: Signal grey body and wheel caps. 2-1/2" and 3" can be supplied in black. 4" and 5" casters can be supplied in grey or white. These casters can be color matched to your equipment (subject to minimum order quantity).

Tire Materials: Available with dark grey antistatic or polyurethane tires. 2-1/2", 3" and 4" wheels have plain bearing and are riveted to the axle for security and strength. 3" available with grey nylon wheel. 5" has sealed precision ball bearings in the wheels to make even the heaviest loads roll easily.

Options: A non-magnetic version of these casters is available making them ideal for MRI applications. The 4" version can be supplied with precision ball bearings in the swivel and/or the wheels for maximum mobility.

Typical Applications Include: Furniture, P-O-P, visual merchandising, medical and institutional.

A wide selection of steel casters is offered for that more traditional appearance. Many of these casters can be dressed up by color matching to your requirements.

1NF-Q – Light Duty Single Wheel Casters

Capacities up to 150 lb.

Stamped steel casters available as rigid, swivel and swivel with wheel brake. Swivel casters have an easy pivoting double-row ball bearing swivel.



Sizes: 2", 2-1/2", 3", 4" and 5"

Mounting Types: Top plate, grip-ring, socket and threaded stems. Complete assortment of sockets available to fit almost any application.

Finishes: Bright zinc plated finish. These casters can be chrome, nickel or antique brass plated or powder coated to color match your equipment (subject to minimum order quantity).

Tire Materials: Black cushion rubber; black hard rubber and black polyolefin wheels are available. All wheels have plain wheel bearing on a riveted axle.

Options: Antistatic rubber; grey rubber; grey thermoplastic rubber; polyolefin and polyurethane wheels available (subject to minimum order quantity).

Typical Applications Include: Light weight furniture, P-O-P, visual merchandising.

1NF-S – Light Duty Casters

Capacities up to 175 lb.

Stamped steel casters available as rigid, swivel, swivel with Maxi-Lok™, combination swivel lock and wheel brake (the 2" has a wheel brake only). Swivel casters have a strong, easy pivoting double-row ball bearing swivel.



Sizes: 2", 3", and 4" (50, 75, and 100 mm)

Mounting Types: Top plate, hollow kingpin, grip-ring, expanding, socket and threaded stems. Complete assortment of sockets available to fit almost any application. Swivel bearing cap standard with expanding stem

Finishes: Bright zinc chromated plated finish. These casters can be color matched to your equipment (subject to minimum order quantity).

Tire Materials: All sizes available with antistatic tire materials, grey rubber and grey polyurethane tires. All sizes have sleeve, plain or ball bearings in the wheels. All wheels have nut & bolt axle for ease of cleaning. Thread guards are available on many wheels. Thread guards keep string, sutures, hair and other debris out of the wheel bearing allowing the wheel to roll freely.

Options: Grey thermoplastic rubber tire wheel available,

Typical Applications Include: Light weight furniture, P-O-P, visual merchandising, medical and institutional.

2NF-S/D – Medium Duty Casters**Capacities up to 220 lb.**

Economical stamped steel casters available as rigid, swivel and swivel with **Maxi-Lok™** combination swivel lock and wheel brake. Swivel casters have a strong, easy pivoting double-row ball bearing swivel with dirt seal in the upper raceway.



Sizes: 4" and 5" (100 and 125 mm)

Mounting Types: Top plate, hollow kingpin, pin, expanding and threaded stems. Swivel bearing cap standard with expanding stem.

Finishes: Bright zinc chromated plated finish. These casters can be color matched to your equipment (subject to minimum order quantity).

Tire Materials: Available with antistatic, grey rubber; nylon, polyurethane and thermoplastic rubber tires. Wheels have sleeve, ball or precision ball bearings.

All wheels have nut & bolt axle for ease of cleaning. Thread guards are available on many wheels.

Typical Applications Include: Furniture, P-O-P, visual merchandising, medical and institutional.

2NF-S – Medium Duty Casters**Capacities up to 220 lb.**

Stamped steel casters available as rigid, swivel and swivel with **Maxi-Lok™** combination swivel lock and wheel brake. All sizes are available with **Track-Lok™** steering lock mechanism. Swivel casters have a strong, easy pivoting protected double-row ball bearing swivel.



Sizes: 3", 4", 5" and 6" (75, 100, 125 and 150 mm)

Mounting Types: Top plate, hollow kingpin, pin, expanding and threaded stems.

Finishes: Bright zinc-chromated plated finish. These casters can be color matched to your equipment (subject to minimum order quantity).

Tire Materials: Available with antistatic, grey rubber; nylon, polyurethane and thermoplastic rubber tires. Wheels have sleeve, ball or precision ball bearings in the wheels. All wheels have nut

& bolt axle for ease of cleaning. Thread guards are available on many wheels.

Typical Applications Include: Furniture, P-O-P, visual merchandising, medical and institutional.

2NF-Q – Economical Medium Duty Industrial Style Casters**Capacities up to 300 lb.**

Stamped steel casters available as rigid, swivel and swivel with wheel brake. Swivel casters have an easy pivoting double-row ball bearing swivel mechanism.



Sizes: 3", 4" and 5"

Mounting Types: Top plate, grip-ring and threaded stems. Complete assortment of sockets available to fit almost any application.

Finishes: Bright zinc plated finish. These casters can be chrome plated or powder coated to color match your equipment (subject to minimum order quantity).

Tire Materials: Black cushion rubber; black hard rubber and black polyolefin wheels are available.

All wheels have plain wheel bearing.

Options: Antistatic rubber; phenolic, grey thermoplastic rubber, grey polyolefin, grey rubber and polyurethane wheels available, subject to minimum order quantity. Ball bearing wheels can also be supplied.

Typical Applications Include: Furniture, P-O-P, visual merchandising.

**2NF-G – MultiTask™ Industrial Style Casters****Capacities up to 300 lb.**

Stamped steel casters available as rigid, swivel and swivel with Maxi-Lok™ brake. Swivel casters have a sealed easy pivoting double-row ball bearing swivel.



Sizes: 3-1/2", 4" and 5"

Mounting Types: Top plate, hollow kingpin and threaded stems.

Finishes: Bright zinc plated finish. These casters can be chrome plated or powder coated to color match your equipment (subject to minimum order quantity).

Tire Materials: Black cushion rubber; black hard rubber, nylon, polyolefin, polyurethane, thermoplastic rubber, grey rubber, antistatic rubber and phenolic wheels are available. Wheels have plain wheel, sleeve, roller or ball bearings. Note: 3-1/2" phenolic wheels are not available.

Typical Applications Include: Furniture, P-O-P, visual merchandising, medical and institutional.



The fiberglass filled virgin nylon body gives these casters a modern look – that will last over time. Engineered to be just as strong and durable as steel casters...yet with greater style!

2NF/M – Single Wheel Nylon Casters

Capacities up to 220 lb.

Nylon body casters available as rigid, swivel and swivel with Maxi-Lok™ combination swivel lock and wheel brake. Swivel casters have a patented “splash-proof” double-row ball bearing swivel which is strong, easy pivoting and very quiet.



Sizes: 4" and 5" (100 and 125 mm)

Mounting Types: Top plate, hollow kingpin, pin, expanding and threaded stems.

Finish: Grey colored body. These casters can be color matched to your equipment (subject to minimum order quantity).

Tire Materials: Available with grey rubber, nylon, polyurethane and thermoplastic rubber tires. Wheels have sleeve, ball or precision ball bearings in the hubs. All wheels have nut & bolt axle for ease of cleaning. Thread guards are available on many wheels.

Options: An antistatic version of these casters is available with polyurethane or rubber tire. Stainless steel version is available for frequent washdowns or MRI applications.

Typical Applications Include: Furniture, visual merchandising, medical and institutional.

2GF/M – Single Wheel Nylon Casters

Capacities up to 220 lb.

Nylon body casters available as rigid, swivel, swivel with Maxi-Lok™ combination swivel lock and wheel brake and swivel with Track-Lok™ steering lock mechanism. Swivel casters have a patented “splash-proof” double-row ball bearing swivel which is strong, easy pivoting and very quiet.



Size: 5" (125 mm)

Mounting Types: Top plate, hollow kingpin, pin, expanding and threaded stems.

Finish: Grey colored body. These casters can be color matched to your equipment (subject to minimum order quantity).

Tire Materials: Available with grey rubber, nylon, polyurethane and thermoplastic rubber tires. Wheels have sleeve, ball or precision ball bearings. All wheels have nut & bolt axle for ease of cleaning. Thread guards are available on many wheels.

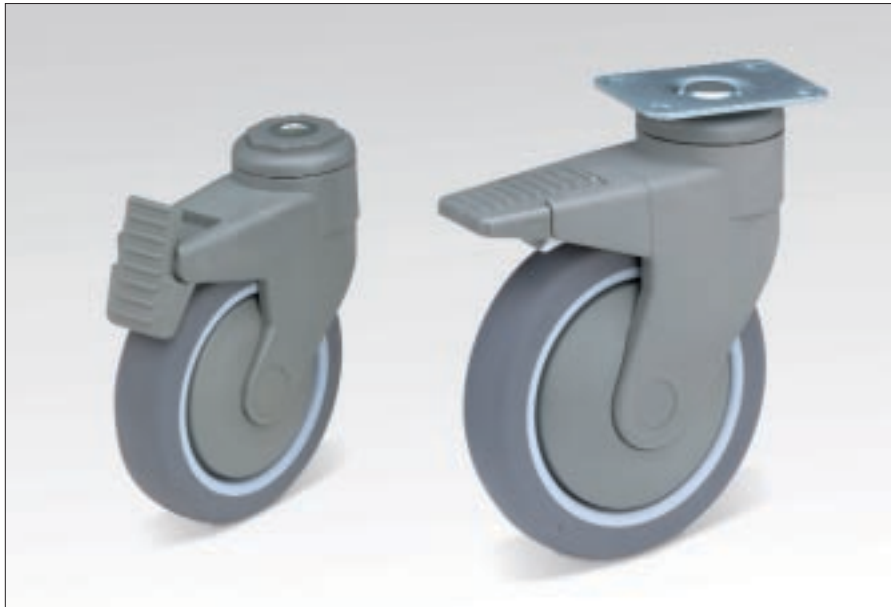
Options: An antistatic version of these casters is available with polyurethane or rubber tire. Stainless steel version is available for frequent washdowns or MRI applications.

Typical Applications Include: Furniture, visual merchandising, medical and institutional.

2NM/M – Single Wheel “High-End” Nylon Casters

Capacities up to 245 lb.

Long lasting nylon body casters available as swivel and swivel with Maxi-Lok™ brake. The swivel has a strong, sealed precision ball bearing for maximum swiveling ease.



Sizes: 4", 5" 6" and 8" (100, 125, 150 and 200 mm)

Mounting Types: Top plate, hollow kingpin, threaded hollow kingpin, pin, and threaded stems. Also available with expanded stem, although not recommended for casters with Maxi-Lok brake.

Finish: Medium grey colored body. These casters can be color matched to your equipment (subject to minimum order quantity).

Tire Materials: Available with grey pneumatic, thermoplastic rubber, SuperSoft™ rubber or polyurethane tires. Wheels have precision ball bearings for maximum rolling ease and grey nylon thread guards. All wheels have nut & bolt axle for ease of cleaning.

Options: An antistatic version of these casters is also available with rubber tire.

Typical Applications Include: Furniture, visual merchandising, medical and institutional.

Clean die cast metal body casters with only one leg for a unique appearance and ease of cleaning. Great performance from a great looking caster!

2GM – Zinc Die Cast Single Wheel Casters

Capacities up to 220 lb.

Available as rigid, swivel, swivel with Maxi-Lok™, swivel with Track-Lok™ mechanism and swivel with Dual-Function brake. The swivel has a strong, sealed precision ball bearing for maximum swiveling ease. Easily powder coated to color



Size: 5" (125 mm)

Mounting Types: Top plate, pin and threaded stems.

Finish: Inert powder coated white finish. These casters can be color matched to your equipment (subject to minimum order quantity).

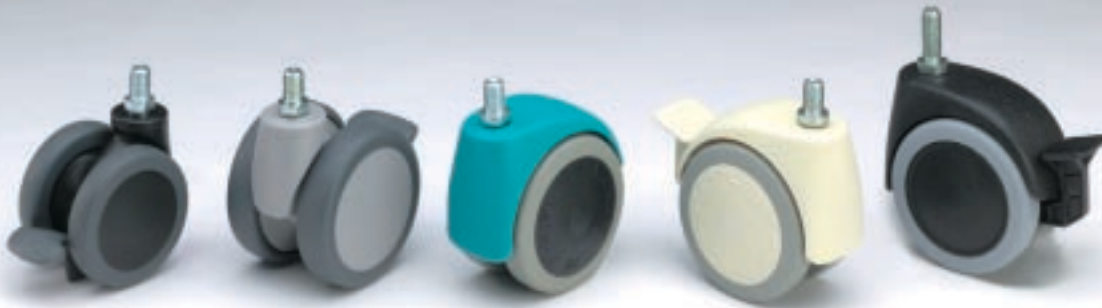
Tire Materials: Available with antistatic and grey polyurethane tires. Wheels have precision ball bearing for maximum rolling ease, very quiet operation and a thread guard which is an integral part of the body.

Typical Applications Include: Furniture, visual merchandising, medical and institutional.



Jilson offers a variety of "special" casters to create a unique design. Many of our casters can be customized to give you a totally integrated appearance. Don't see what you need in this catalog? Call us at 800-969-5400 and one of our expert design technicians will help you put the right moves on your prod-

Jilson's die-cast casters can be ordered with a custom finish or powder coated to match a specific color and create a highly attractive appearance. Die-cast casters, like the Series 1JB pictured, may be color-matched at much lower quantities than nylon casters, so that even your smaller quantity applications can have that custom look.



Jilson's nylon casters can be molded in the color of your choice to complete that special look you may require for your product. Since nylon casters are injection molded, there is a higher minimum order quantity to color match.

Simply changing the caster wheel can alter the appearance of our casters — and Jilson has many different wheels available! Pictured is the 3" Series 1NF caster with a black nylon wheel, light grey rubber tire, dark grey rubber tire, and grey polyurethane tire and wheel.



Can't find the exact caster look you need? Challenge Jilson to find the solution! We deliver many casters that create a truly unique appearance. Pictured are samples of just some of the special casters we supply.

The **Jilson** Group
INCORPORATED
Caster Products Division

We go to extremes to make things move.™

20 Industrial Road, Lodi, NJ 07644-2608
800-969-5400 • 973-471-2400 • Fax 973-471-3993
www.jilson.com • info@jilson.com